

GF kaplin- GF coupling (Type1 Type2)
Standart series- Standart seriler

Kod Code	Temel ölçüler Fundamental dimensions								Delik Bore		Mak. tork Max. torque (Nm)	Max revolution Mak. devir n (rpm)	Moment of inertia Atalet momenti (kg.cm ²)	Weight Ağırlık (kg)
	D	E	B	C	F	G	H	Pilot	Max					
PDK-14-T1	41	25	51	38	6,5	23,5	4	6	14	23	14000	0,27	0,222	
PDK-19-T1	48	32	55	38	8,5	25,5	4	8	19	37	12000	0,64	0,388	
PDK-24-T1	52	36	57	42	7,5	26,5	4	10	24	46	10000	0,92	0,497	
PDK-28-T1	68	45	86	48	19	41	4	10	28	403	8000	3,45	1,166	
PDK-32-T1	75	50	84	48	18	40	4	12	32	138	7100	5,03	1,424	
PDK-38-T1	85	58	84	50	17	40	4	14	38	176	6300	9,59	1,991	
PDK-42-T1	95	63	88	50	19	42	4	20	42	220	6000	13,06	2,387	
PDK-48-T1	100	68	104	50	27	50	4	20	48	308	5600	18,15	3,198	
PDK-55-T1	120	82	124	65	29,5	60	4	25	55	570	4800	49,44	5,617	
PDK-65-T1	140	95	144	72	36	70	4	25	65	840	4000	106,34	8,635	

GF kaplin- GF coupling (Type3)
Standart series- Standart seriler

Kod Code	Temel ölçüler Fundamental dimensions								Delik Bore		Mak. tork Max. torque (Nm)	Max revolution Mak. devir n (rpm)	Moment of inertia Atalet momenti (kg.cm ²)	Weight Ağırlık (kg)
	D	E	B	C1	F1	G	H	Pilot	Max					
PDK-24-T3	52	36	57	52	2,5	26,5	4	10	24	46	10000	0,92	0,497	
PDK-28-T3	68	45	86	58	14	41	4	10	28	103	8000	3,45	1,166	
PDK-32-T3	75	50	84	58	13	40	4	12	32	138	7100	5,03	1,424	
PDK-38-T3	85	58	84	62	14	40	4	14	38	176	6300	9,59	1,991	
PDK-42-T3	95	63	88	62	14	42	4	20	42	220	6000	13,06	2,387	
PDK-48-T3	100	68	104	66	14	50	4	20	48	308	5600	18,15	3,198	
PDK-55-T3	120	82	124	81	15	60	4	25	55	570	4800	49,44	5,617	
PDK-65-T3	140	95	144	88	15	70	4	25	65	840	4000	106,34	8,635	

Keyway dimensions conform to DIN 6885, JIS B1310-1976, UNI 6604-1969, GB 1095-1979
Kama yuvası ölçüleri DIN 6885, JIS B1310-1976, UNI 6604-1969, GB 1095-1979 standartlarına uymaktadır.

GF kaplin- GF coupling (Type1 Type2)
Daha uzun seriler- Lengthen series

Kod Code	Temel ölçüler Fundamental dimensions								Delik Bore		Mak. tork Max. torque (Nm)	Max revolution Mak. devir n (rpm)	Moment of inertia Atalet momenti (kg.cm ²)	Weight Ağırlık (kg)
	D	E	B	C	F	G	H	Min	Max					
PDK-14L-T1	41	25	64	38	13	30	4	6	14	23	14000	0,32	0,282	
PDK-19L-T1	48	32	84	38	23	40	4	8	19	37	12000	0,9	0,588	
PDK-24L-T1	52	36	104	42	31	50	4	10	24	46	10000	1,7	0,877	
PDK-28L-T1	68	45	124	48	38	60	4	10	28	103	8000	5,1	1,666	
PDK-32L-T1	75	50	124	48	38	60	4	12	2	138	7100	7,68	2,044	
PDK-38L-T1	85	58	164	50	57	80	4	14	38	176	6300	17,45	3,791	
PDK-42L-T1	95	63	224	50	87	110	4	20	42	220	60000	32,15	5,707	
PDK-48L-T1	100	68	224	50	87	110	4	20	48	308	5600	42,9	6,618	
PDK-55L-T1	120	82	224	65	79,5	110	4	25	55	570	4800	92,97	13,597	
PDK-65L-T1	140	95	224	72	76	140	4	25	65	840	4000	211,84	16,435	

GF kaplin- GF coupling (Type3)

Daha uzun seriler-Longthen series

Kod	Temel ölçüler								Delik	Mak. tork	Max revolution	Moment of inertia	Weight
Code	Fundamental dimensions								Bore	Max. torque	Mak. devir	Atalet momenti	Ağırlık
	D	E	B	C1	F1	G	H	Pilot	Max	(Nm)	n (rpm)	(kg.cm ²)	(kg)
PDK-24L-T3	52	36	104	52	26	0	4	10	24	46	10000	1,7	0,877
PDK-28L-T3	68	45	124	58	33	60	4	10	28	103	8000	5,1	1,666
PDK-32L-T3	75	50	124	58	33	60	4	12	32	138	7100	7,68	2,044
PDK-38L-T3	85	58	164	62	52	80	4	14	38	176	6300	17,45	3,791
PDK-42L-T3	95	63	224	62	82	110	4	20	42	220	6000	32,15	5,707
PDK-48L-T3	100	68	224	66	82	110	4	20	48	308	5600	42,9	6,618
PDK-55L-T3	120	82	224	81	71,5	110	4	25	55	570	4800	92,97	13,597
PDK-65L-T3	140	95	224	88	68	140	4	25	65	840	4000	211,84	16,435

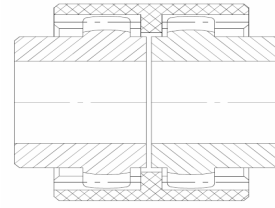
Keyway dimensions conform to DIN 6885, JIS B1310-1976, UNI 6604-1969, GB 1095-1979

Kama yuvası ölçüleri DIN 6885, JIS B1310-1976, UNI 6604-1969, GB 1095-1979 standartlarına uymaktadır.

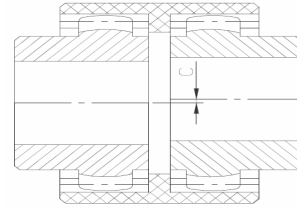
Katalog Paralel misalignment Angular misalignment Shaft End-play

Catalog

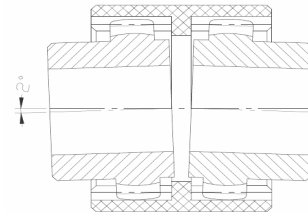
GF-14	0,7	± 2°	± 1
GF-19	0,8	± 2°	± 1
GF-24	0,8	± 2°	± 1
GF-28	1	± 2°	± 1
GF-32	1	± 2°	± 1
GF-38	0,9	± 2°	± 1
GF-42	0,9	± 2°	± 1
GF-48	0,9	± 2°	± 1
GF-55	1,2	± 2°	± 1
GF-65	1,3	± 2°	± 1



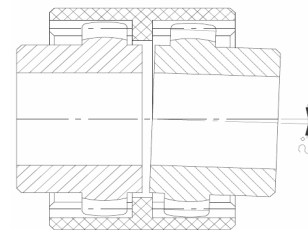
end floating



parallel misalignment



angular misalignment



composite misalignment