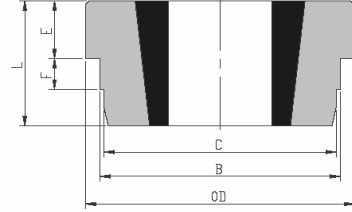


**KOVANLAR
SOCKETS**

Tip W konik kovanlar

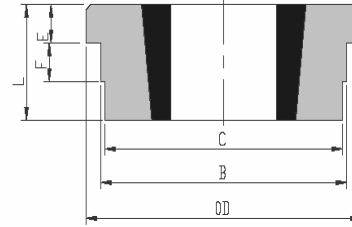
Göbek	Kovan No.	OD	B	C	L	E	F	Kod
Hub	Socket No							Code
W12	1215	73,03	63,5	62,71	38,1	15,88	9,53	W12-K
W16	1615	82,55	73,03	72,24	38,1	15,88	9,53	W16-K
W20	2017	101,6	88,9	88,11	44,4	19,05	11,91	W20-K
W25	2517	127	111,13	110,34	44,4	19,05	12,7	W25-K
W30	3030	149,86	133,35	132,56	76,2	25,4	19,05	W30-K
W35	3535	184,15	158,75	157,96	88,9	31,75	25,4	W35-K
W40	4040	225,43	196,85	196,06	101,6	31,75	31,75	W40-K
W45	4545	254	222,25	221,46	114,3	38,1	38,1	W45-K



BF

Tip WH konik kovanlar

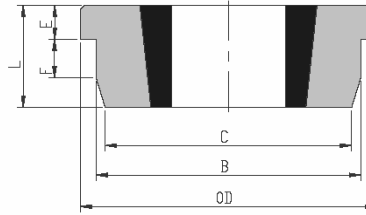
Göbek	Kovan No.	OD	B	C	L	E	F	Kod
Hub	Socket No							Code
WH12	1210	70	65	64,5	25	9	10	WH12-K
WH16	1610	80	75	74,5	25	9	10	WH16-K
WH20	2012	95	90	89,5	32	12	12	WH20-K
WH25	2517	115	110	109,5	44	19	15	WH25-K
WH30	3020	145	140	139,5	50	20	15	WH30-K
WH35	3525	190	180	179,5	65	25	25	WH35-K
WH35-2	3535	190	180	179,5	89	25	25	WH35-2-K
WH40-1	4030	200	190	189,5	76	32	30	WH40-1-K
WH40-2	4040	200	190	189,5	101	32	30	WH40-2-K
WH45-1	4535	210	200	199,5	89	40	30	WH45-1-K
WH45-2	4545	210	200	199,5	114	40	30	WH45-2-K
WH50-1	5040	230	220	219,5	102	40	35	WH50-1-K
WH50-2	5050	230	220	219,5	127	40	35	WH50-2-K



WH

Tip WM konik kovanlar

Göbek	Kovan No.	OD	B	C	L	E	F	Kod
Hub	Socket No							Code
WM12	1210	70	60	58	25	9	10	WM12-K
WM16-1	1610	83	70	68	25	9	10	WM16-1-K
WM16-2	1615	83	70	68	38	16	11	WM16-2-K
WM20	2012	95	90	88	32	12	12	WM20-K
WM25	2517	127	110	108	44	19	13	WM25-K
WM30-1	3020	152	130	125	50	20	15	WM30-1-K
WM30-2	3030	152	130	125	76	25	19	WM30-2-K
WM35	3535	184	155	151	89	32	25	WM35-K
WM40	4040	225	195	187	102	32	32	WM40-K
WM45	4545	254	220	213	114	38	38	WM45-K
WM50	5050	276	242	228	127	38	38	WM50-K



WM